

Highway 70 West Industrial Park Kinston/Lenoir County



Ideal for manufacturing or distribution

Mark Pope, Executive Director

Lenoir County Economic Development Department

PO Box 897 • Kinston, NC 28502

(252) 527-1963 office • (252) 559-3907 cell

mpope@lenoiredc.com

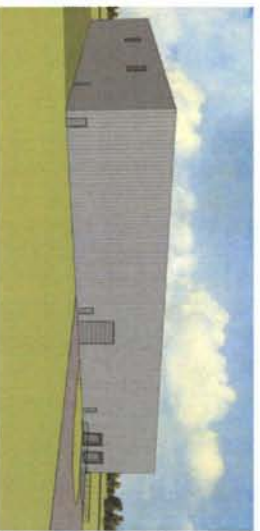
Hwy 70 West Industrial Park • 2010 Smithfield Way, Kinston, NC

General Information

Acreage: 9 acres; Additional 8 acres available for expansion
Square Feet: 40,000 expandable to 160,000 sq. ft.
Building Area: Build to suit; building is suitable for multi-uses
Ceiling Heights: 30' minimum clear
Column Spacing: 40' x 40'
Walls: precast walls / metal
Exterior: precast / metal
Interior: precast / metal
Floor: 10 mil vapor barrier compacted and ready for slab
Dock Doors: 2
Drive-In Doors: 1
Zoning: Industrial
Permitted Uses: Manufacturing / Warehouse

Workforce/Training

Area Colleges/Universities:
 East Carolina University/East Carolina School of Medicine, Greenville;
 Mount Olive College, Mt. Olive;
 Barton College, Wilson;
 North Carolina Wesleyan College, Rocky Mount;
 Lenoir Community College, Kinston



LENOIR COUNTY ED SHEIL BUILDING
 MONTHLY EXTENSION PERSPECTIVE

LENOIR, NC
 SCALE 1/8" = 1'-0"
 PINN & DALTON
 ARCHITECTS

Utilities

Electric
Service Provider: City of Kinston
Transmission Voltage: 115 KV, .25 miles from site
Primary Voltage: 7,200/12,470 Volts (3 Phase, Wye)
Transformers: Sizes up to 2,500KVA
Secondary Voltages: 120/208 V (3 phase), or 277/480 Volts (3 phase)
Primary Substation: Industrial Park West Substation, Located on Smithfield Way, .25 miles from the site. Currently under construction.
Next Closest Substation: Hull Road Substation, 2.5 miles from site.

Water
Service provider: City of Kinston
Line size: 16" (at the property)
Static pressure: 64 psi
Flow: 1,290 gpm
Excess plant capacity: 4.8 MGD

Wastewater
Service provider: City of Kinston
Line size: 12" (at the property)
Available line capacity: 0.7 gpd
Current downstream capacity: 0.2 MGD with future expansion planned for additional 1.0 MGD



LENOIR COUNTY ED SHEIL BUILDING
 MONTHLY EXTENSION PERSPECTIVE

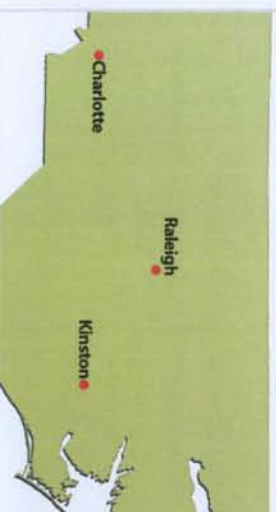
LENOIR, NC
 SCALE 1/8" = 1'-0"
 PINN & DALTON
 ARCHITECTS

Natural Gas
Service provider: Piedmont Natural Gas
Line size: 4" / 6"

Telecommunications
Service provider: Embarg/Suddenlink
Fiber optics: Yes

Access

Deepwater Ports: Wilmington, NC and Morehead City, NC (intracoastal waterways and inlets)
Rail: Norfolk Southern, CSX and smaller regional operators
Nearby Highways: US 70 (4-lane divided highway), I-95 and I-40 (45 minutes away)
Air: Kinston Regional Jetport (located at the Global TransPark). Airport facilities include an 11,500 foot runway, FAA Control Tower and CAT I ILS upgraded to CAT III. Raleigh-Durham International Airport is 90 minutes west.
One-day trucking services from: Atlanta, Baltimore, New York, Philadelphia and Jacksonville, Florida



Prime Eastern North Carolina Location